



OEC CHICAGO MOVES TO NEW LOCATION

As of November, OEC Chicago officially moved into a new building in neighboring Willowbrook, IL. OEC's Burr Ridge location was experiencing growth that required a larger facility to meet the needs of customers and employees. After a thorough search of commercial properties in the area, this nearby free-standing facility was discovered just twenty miles southwest of downtown Chicago. It is an extremely secure building, with easy access, located just two minutes off the interchange of Highways 55 and 83.

Dean Dimitriou, OEC Chicago's General Manager, is enthusiastic about the property's features. "At just under 20,000 square feet, the building has a layout that works extremely well for us." He adds, "It has a very professional appearance and can truly accommodate our manufacturing needs as well as the needs of our customers who visit."

A new building can be challenging, but is worth the rewards. As the move progressed, ongoing improvements were made to enhance the layout. In this six week transition from Burr Ridge to Willowbrook, OEC employees kept the company running smoothly while helping out with the move. As Dimitriou explains, "I was extremely proud of

our people during this transition. About 60% of our workforce took on new duties while working odd hours. This move would not have been possible without their help and the support of the OEC corporate staff."

OEC Chicago plans to host an open house for customers and vendors in April. Look for more information directly from OEC Chicago in the month of March. Jeff Schloesser,



"...the building has a layout that works extremely well for us"
- Dean Dimitriou

Corporate VP of Sales and Operations, adds "We are excited to show customers the new and improved OEC Chicago. Without them, this move would not have been possible. The building reaffirms OEC Graphics' commitment to providing the best possible service to our customers in Chicago and its surrounding communities." ■

Please note OEC Chicago's new address:

OEC Graphics - Chicago, LLC
7630 South Quincy St.
Willowbrook, IL 60527

TOM RUNNING STEPS DOWN OEC-IT TRANSITIONS AS GM RETIRES



Tom Running established a solid business with a great culture.

Tom Running, founder of Image I.T. (now OEC-I.T.), chose to step down as General Manager of the company and retire at the end of 2006. Tom had decided that he would gradually phase out of the company after OEC Graphics purchased it in 2004. Shortly after Image I.T. became OEC Graphics-I.T., Brad Vette started working with Tom to help manage the facility and transition it into the corporation. Brad still functioned as OEC's Corporate Business Development Manager, but also shared responsibility for OEC-I.T. After two years under the OEC umbrella, Tom was ready to retire and Brad took over the lead role in the company.

See Tom Running, page 2

VISUAL INVESTMENTS

INSIDE

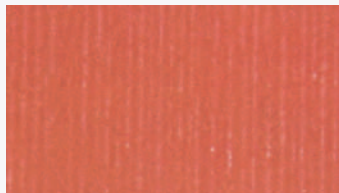
- New Chicago Facility
- I.T. Transitions
- Ask Dick:
Ink Striation, Ink Trap
or Light Impression?
- New Corrugated
Equipment
- Fast & Sharp,
Large Format



A visual assessment of overall print quality is a routine part of the design critique at the press. Less than desirable ink coverage or appearance is often noted and questioned. The causes can be numerous. It is important to be able to differentiate between plate impression, ink striation and ink trap issues. The images included in this article will assist in the identification of each of these situations.

From my experience, the most common causes for plate impression shortfalls are that the plate is too hard for the substrate on which it prints or the plate mount tape is too soft. There are many types of plate mounting tapes in the marketplace and a better tape alternative may exist. We cannot overlook the obvious, that additional plate-to-substrate impression may be needed. Other contributing factors may be involved, such as cylinder eccentricity, plate bounce, substrate surface non-uniformity, plate height variation, plate mount tape thickness variation, bad sleeves or bridges and the like.

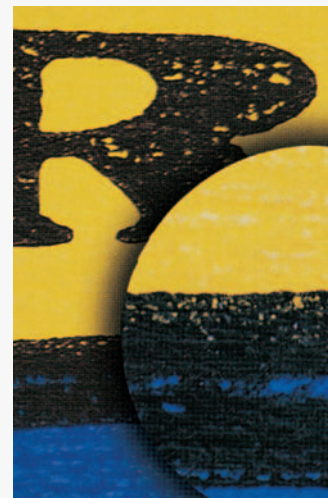
Ink striation issues are usually attributable to plugged or dirty anilox rolls or the anilox rolls are too low line count or the volume is too high. Under certain conditions plates that are too hard can also cause this striated appearance.



Ink Striation – caused by dirty anilox rolls

You can usually differentiate between the two. If ink viscosity is too low this can contribute to the striated appearance as well. In this case, raise the ink viscosity and see if the appearance improves or the striation disappears.

Ink trap shortfalls can have the appearance of light impression. It is usually caused by the first color down not being dry before the next color overprints it, or the next color down is drying too fast. In the case of water-based ink, the pH may be too low or too high. The problem is usually more prevalent in film printing or high-holdout substrates. Changing an anilox roll to increase or reduce ink film thickness may be a possibility to correct this situation. Leaving an open station between the two problem colors to provide improved between-color drying may be an option. ■



Ink Trap – This detail illustrates the results of ink not being dry before reaching the next station.



IMPRESSION – CYAN



IMPRESSION – MAGENTA



IMPRESSION – BLACK

Tom Running

continued from front page

As OEC's new Corporate Managing Director, Brad maintains the traditional GM role at OEC-I.T., managing the company's sales, operations and finance. In addition, he also continues to oversee all corporate business development, working closely with each facility. Brad emphasizes, "With Tom's departure, we want to assure our customers that the core business philosophies of OEC-I.T. will remain the same. This includes the highest level of customer focus and the same business strategies that have made the company so successful." He also believes the transition has been a relatively seamless one. "Over the course of the last year, the transition has been

smooth due to a very strong management team at OEC-I.T. and a significant amount of corporate support."

The next question could be: Where does OEC-I.T. go from here? Vette certainly has his ideas. In the short term, he believes the company will continue to concentrate on its core strengths: prepress and asset management services. In the future, he'd like to see the company expand further into the food, publishing and consumer products industries. There is one thing we all agree on, Tom Running established a solid business with a great culture and OEC Graphics-I.T. will do our best to continue on that path. ■

BRING IT ON: OEC'S NEW & IMPROVED ROLL TO ROLL PRESS

OEC has added a grand format output device to our Display Graphics division. The Jeti 3324 roll to roll inkjet printer features 24 Spectra print heads for true 600 dpi resolution (1200 dpi apparent). This six color machine provides brilliant color at industrial production speeds. Grand format sizes go up to 128" for a one piece graphic. This machine is excellent for banners, mesh, floor and window graphics and pressure-sensitive films. Ask your salesman today about the advantages of our new roll-to-roll digital press.



big, fast, high-quality prints

If you'd prefer, email John Sweeterman, OEC's Display Graphics Sales and Marketing Manager, at john.sweeterman@oecgraphics.com for more information. ■

APPLETON INSTALLS NEW MOUNTING EQUIPMENT

OEC Appleton has recently installed a new corrugated plate-mounter, the Anderson-Vreeland Flexologic. The machine provides a superior mounting method due to its extreme precision. Advantages of the unit include video cameras, which show a combination of an image of the proof on the proofing cylinder and its location on the plate cylinder to allow exact positioning. The unit has independently driven cylinders which allow the operator the use of one diameter cylinder but the ability to simulate a mount proof of a smaller diameter press cylinder, eliminating the need to swap them out. A Windows operating system also stores specific customer press information.

Jeff Dominick, OEC-Appleton's Manufacturing Manager, explains the philosophy behind the mounter, "We felt that we needed to mount with some kind of enlarged optical registration in order to service our customers and the industry appropriately." He adds, "Other advances in the corrugated post print segment with presses, paper, ink and UV coating call for the video mounting method as a natural progression in order to achieve pin-point registration." As a back-up method, OEC Appleton also purchased an E.L. Harley Opti-Chek which offers all the advantages of the Flexologic with the simplicity of a mechanical non-electrical powered device. Together, these two pieces of equipment are sure to strengthen Appleton's core corrugated prepress business and challenge OEC's competition.

Suggested Handling & Storage of Mounted Corrugated Plates

Although some corrugated plates are mounted flat, most corrugated plates are mounted in a curve. Plates mounted in the curve use a cylinder as close in diameter as possible to the press cylinder. The following handling instructions are for plates mounted in the curve.

HANDLING

- Do not lay flat or reverse curl, it will cause the printing plate to buckle and form air bubbles between the carrier and the sticky-back. The edge sealer will also break, allowing water or ink to break down the sticky-back causing the plate to lift from the carrier.
- Avoid kinking the carrier sheet.
- Clean plates before storage. Proper plate wash-up can lengthen plate life. Use a proper plate wash (mild soap and water in most cases) that will cut the ink without hurting the plate material. Using harsher chemicals (paint, lacquer thinners, acetone, trichloroethylene, mineral spirits) may remove one or more of the protective layers from the surface of the plate, making it crack, chip or feel tacky.
- Using a lint free cloth or sponge saturated with the plate wash, dab the plate until the ink loosens and can be sponged off with a second cloth or sponge. Avoid scrubbing the plates.
- Forced air should be used to blow away any residual plate wash.
- Mounted plates should be completely dry before storing.
- A portable plate-cleaning device can provide a nice one-step substitute for the above process.

STORAGE

- Store plates in cool, dry and dark areas not exceeding 100° F.
- Multi-color mounted plates should be slip-sheeted with kraft paper or corrugated liner to avoid them sticking to one another.
- Carriers should be stored in a covered box or tube and away from ozone sources such as fluorescent lighting, power stations and press motor drives. ■

VISUAL INSIGHTS

A Quarterly Publication of:
OEC GRAPHICS, INC.

555 W Waukau Avenue
PO Box 2443
Oshkosh WI 54903-2443
920-235-7770
800-388-7770
Fax 920-235-2252
www.oecgraphics.com

EDITOR

Jennifer Navin – jennifer.navin@oecgraphics.com

HUMAN RESOURCES

Janine Diana – janine.diana@oecgraphics.com

OEC LOOKS AHEAD TO 2007 TRADE SHOWS

Once again, OEC is looking forward to connecting with our customers this year at industry trade shows. This spring will get off to a great start as we cross the border to Montreal for the FFTA's 2007 Annual Forum & INFO*FLEX exhibition. Dubbed, "Flexo's Global Getaway," the forum will cover a variety of topics with a special focus on global issues impacting the flexo industry today. The convention will be held from May 6–9 at the Palais des congres de Montreal, with the exhibition taking place the last two days of the convention. Be sure to visit OEC at **booth 415/514** to catch up on new technologies we are offering.



OEC's next stop will be at CPP EXPO, taking place October 15–17 at the Las Vegas Convention Center. This show is on its third year and has been accumulating strong momentum. The collocation with PMMI/Pack Expo and Process Expo offers attendees a broader spectrum of exhibitors covering all areas of equipment,



products, services and supplies for the print and packaging industries. Join us in Vegas. OEC will be in **booth 7412** and would welcome the opportunity to meet with you. ■